



kickstart

QUICK START GUIDE

KEITHLEY

A Tektronix Company

Safety precautions

Before using this product, see the safety precautions associated with your instrument. The instrumentation associated with this software is intended for use by personnel who recognize shock hazards and are familiar with the instrument safety precautions to avoid possible injury. Read and follow all installation, operation, and maintenance information carefully before using any instrument.

Refer to your instrument's user documentation for complete product specifications. If the product is used in a manner not specified, the protection provided by the product warranty may be impaired.

Safety precaution revision as of January 2018.

KickStart

Instruments Apps

DAQ
DAQ6510
My DAQ6510
USB

Advanced

Your instruments are automatically discovered and appear in the instruments pane. Make sure each instrument is connected separately to a PC using one of the supported communication interfaces: USB, GPIB, or LAN. Then, the instrument will be automatically discovered by the software.

Right-click an instrument to view more details.

Select the Settings icon to change your color theme, or manage licenses.



Instruments Apps

DAQ
DAQ6510
My DAQ6510
USB

To launch an app, you can either drag the instrument to the main window, or double-click the instrument.

DAQ
DAQ6510
My DAQ6510
USB

Once your instrument is in the main window, select the app you want to create.

If you have other supported instruments connected to your computer, you can add more instruments to the main window and select an app for each one.

Select an app. x

Data Logger

DMM
1.946

OK Cancel



Instruments Apps

Data Logger-1



DAQ
DAQ6510
My DAQ6510
USB In Use

Settings Table Graph

Scan

Function: DC Voltage

Range: Auto

NPLC: 1

Units: V

Channel: 101

Name: 101

Filter

Math

Limit 1

Limit 2

Measure Now

Channels

- 101
- 102
- 103
- 104
- 105
- 106
- 107
- 108
- 109
- 110
- 111
- 112
- 113
- 114
- 115
- 116

Note that each app has different settings. Make sure that you configure your test specifically for your instrument settings.

Save Settings Cancel

Scan Settings

Scan Start: Immediate

Channel Start: Immediate

Scan Stop: On Scan Cou...

Interval Between Scans: 0 s

Scan Count: 100

Digital Output: Low



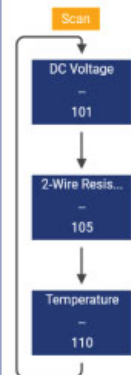


Instruments Apps

Data Logger-1

Settings Table Graph

DAQ
DAQ6510
My DAQ6510
USB In Use



Function None ▾

In the Data Logger app, you can create more than one scan group. Also, you can select a group to make changes, if needed.

Channels

 101 102 103 104 105 106 107 108 109 110 111 112 113 114 115 116 ...

Select Run to start testing.

Select Instruments to access information about instruments connected to this app. Note that some apps can handle more than one instrument and you can add more instruments to your testing using this button.

Scan Settings

Scan Start Immediate ▾

Channel Start Immediate ▾

Scan Stop On Scan Cou... ▾

Interval Between Scans 0 s

Scan Count 100

Digital Output Low ▾

Run app



Instruments ▾



Instruments Apps

Data Logger-1



DAQ
DAQ6510
My DAQ6510
USB In Use

Settings **Table** Graph

	101	105	110	
	Time (s)	Voltage (V)	Resistance (Ω)	Temperature ($^{\circ}\text{C}$)
12	10.923811	2.420143	18.99490e+3	25.133
13	11.978057	49.31636e-3	18.99519e+3	25.130
14	12.923804	2.320101	18.99474e+3	25.124
15	13.976844	48.98190e-3	18.99553e+3	25.121
16	14.923801	1.870955	18.99475e+3	25.126
17	15.976842	47.06733e-3	18.99517e+3	25.099
18	16.923809	1.740084	18.99477e+3	25.096
19	17.976839	44.29455e-3	18.99523e+3	25.106
20	18.923806	1.640703	18.99488e+3	25.108
21	19.976846	48.59602e-3	18.99514e+3	25.101
22	20.923803	1.429004	18.99479e+3	25.113
23	21.976840	48.25358e-3	18.99503e+3	25.122
24	22.923807	1.260584	18.99474e+3	25.128
25	23.976839	48.25214e-3	18.99479e+3	25.133
26	24.921749	2.672900	18.99476e+3	25.137
27	25.923635	1.697880	18.99482e+3	25.153
28	26.976834	48.14060e-3	18.99479e+3	25.155
Min	0.000000	35.94464e-3	18.99474e+3	25.1
Max	27.921750	2.912039	18.99553e+3	25.2
Mean	13.950191	1.170374	18.99499e+3	25.1
StdDev	8.510163	1.171063	219.9369e-3	16.5e-3

Select the Table view.



Instruments Apps

Data Logger-1

Settings Table Graph

DAQ
DAQ6510
My DAQ6510
USB In Use

	101	105	110
	Time (s)	Voltage (V)	Temperature (°C)
		Rename channel... (Ω)	
		Hide	
14	12.923804	2.32010	25.124
15	13.976844	48.98190e-3	25.121
16	14.923801	1.870955	25.126
17	15.976842	47.06733e-3	25.099
18	16.923809	1.740084	25.096
19	17.976839	44.29455e-3	25.106
20	18.923806	1.640703	25.108
21	19.976846	48.59602e-3	25.101
22	20.923803	1.429004	25.113
23	21.976840	48.25358e-3	25.122
24	22.923807	1.260584	25.128
25	23.976839	48.25214e-3	25.133
26	24.921749	2.672900	25.137
27	25.923635	1.697880	25.153
28	26.976834	48.14060e-3	25.155
29	27.921750	2.571602	25.163
30	28.923637	1.680800	25.165
Min	0.000000	35.94464e-3	25.1
Max	51.977835	2.912039	25.2
Mean	25.947035	1.254046	25.1
StdDev	15.439846	1.133562	32.4e-3

Rename the column of data by moving your cursor to the far right to see a drop-down arrow and select it. You will see the option to Rename channel, or Hide it.

Auto Scroll



Instruments Apps

Data Logger-1



Settings Table Graph

	inputV		105	110
	Time (s)	Voltage (V)	Resistance (Ω)	Temperature ($^{\circ}\text{C}$)
14	12.923804	2.320101	18.99474e+3	25.124
15	13.976844	48.98190e-3	18.99553e+3	25.121
16	14.923801	1.870955	18.99475e+3	25.126
17	15.976842	47.06733e-3	18.99517e+3	25.099
18	16.923809	1.740084	18.99477e+3	25.096
19	17.976846	44.29455e-3	18.99523e+3	25.106
20	18.923809	1.640703	18.99488e+3	25.108
21	19.976846	48.59602e-3	18.99514e+3	25.101
22	20.923803	1.429004	18.99479e+3	25.113
23	21.976840	48.25358e-3	18.99503e+3	25.122
24	22.923807	1.260584	18.99474e+3	25.128
25	23.976839	48.25214e-3	18.99479e+3	25.133
26	24.921749	2.672900	18.99476e+3	25.137
27	25.923635	1.697880	18.99482e+3	25.153
28	26.976834	48.14060e-3	18.99479e+3	25.155
29	27.921750	2.571602	18.99530e+3	25.163
30	28.923637	1.680800	18.99486e+3	25.165
Min	0.000000	35.94464e-3	18.99457e+3	25.1
Max	105.976830	2.912039	18.99565e+3	25.3
Mean	52.948718	1.101253	18.99500e+3	25.2
StdDev	31.033018	1.037084	253.1863e-3	45.9e-3

You can right-click any row in the table and Hide or Copy it.





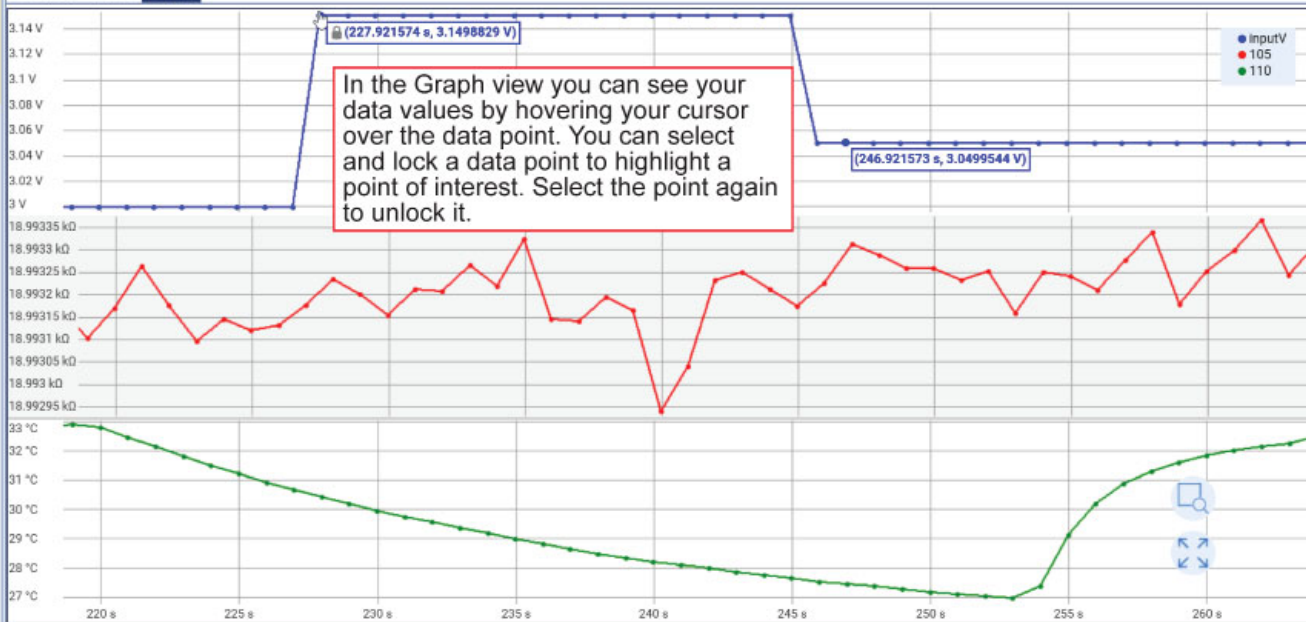
Instruments Apps

Data Logger-1



DAQ
DAQ6510
My DAQ6510
USB In Use

Settings Table Graph





Instruments Apps

Data Logger-1

Settings Table Graph

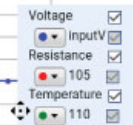
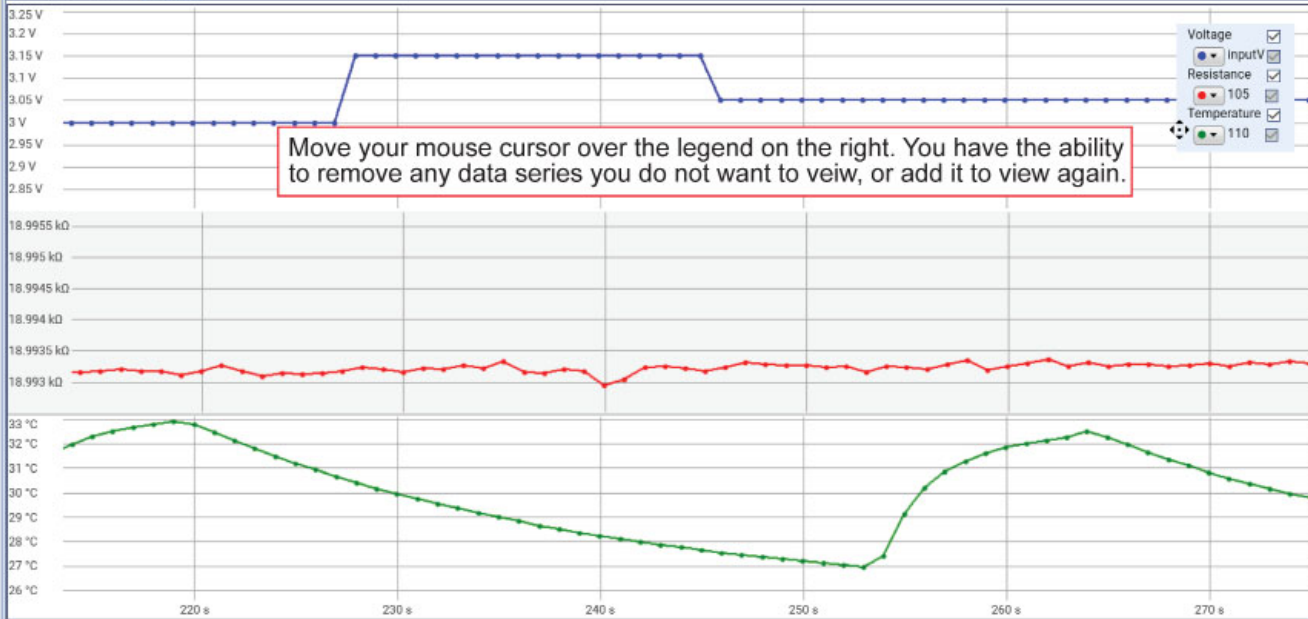
DAQ

DAQ6510

My DAQ6510

USB

In Use



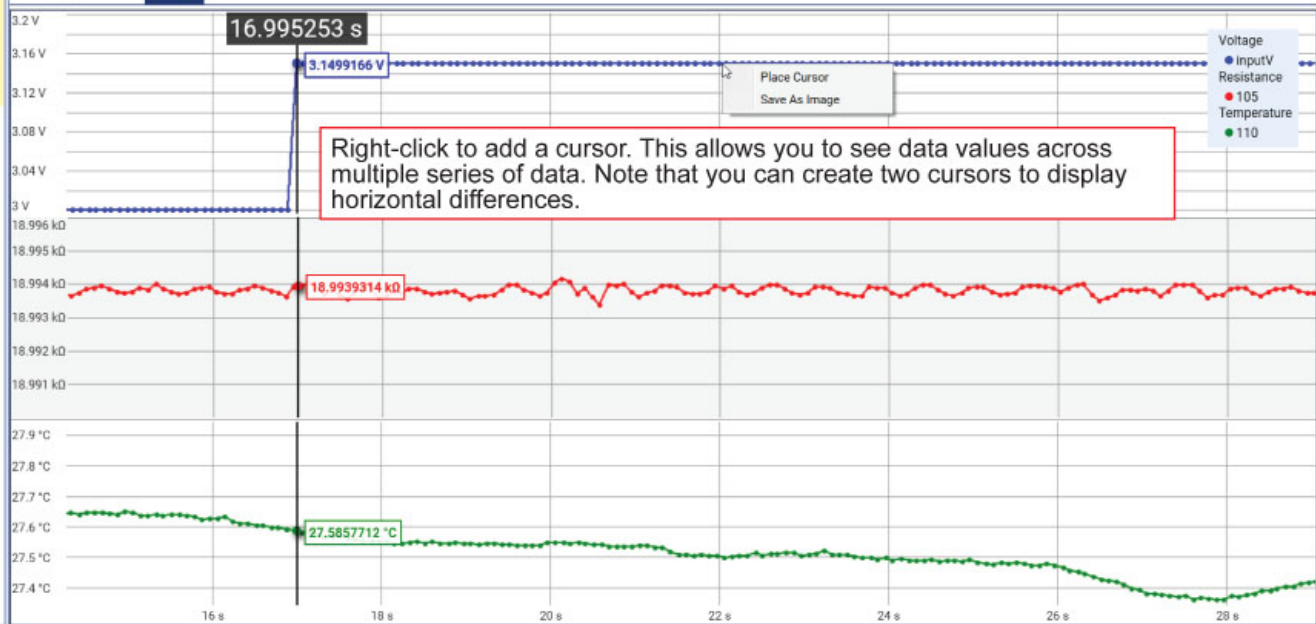
500 of 500 100% 00:00:00 remaining

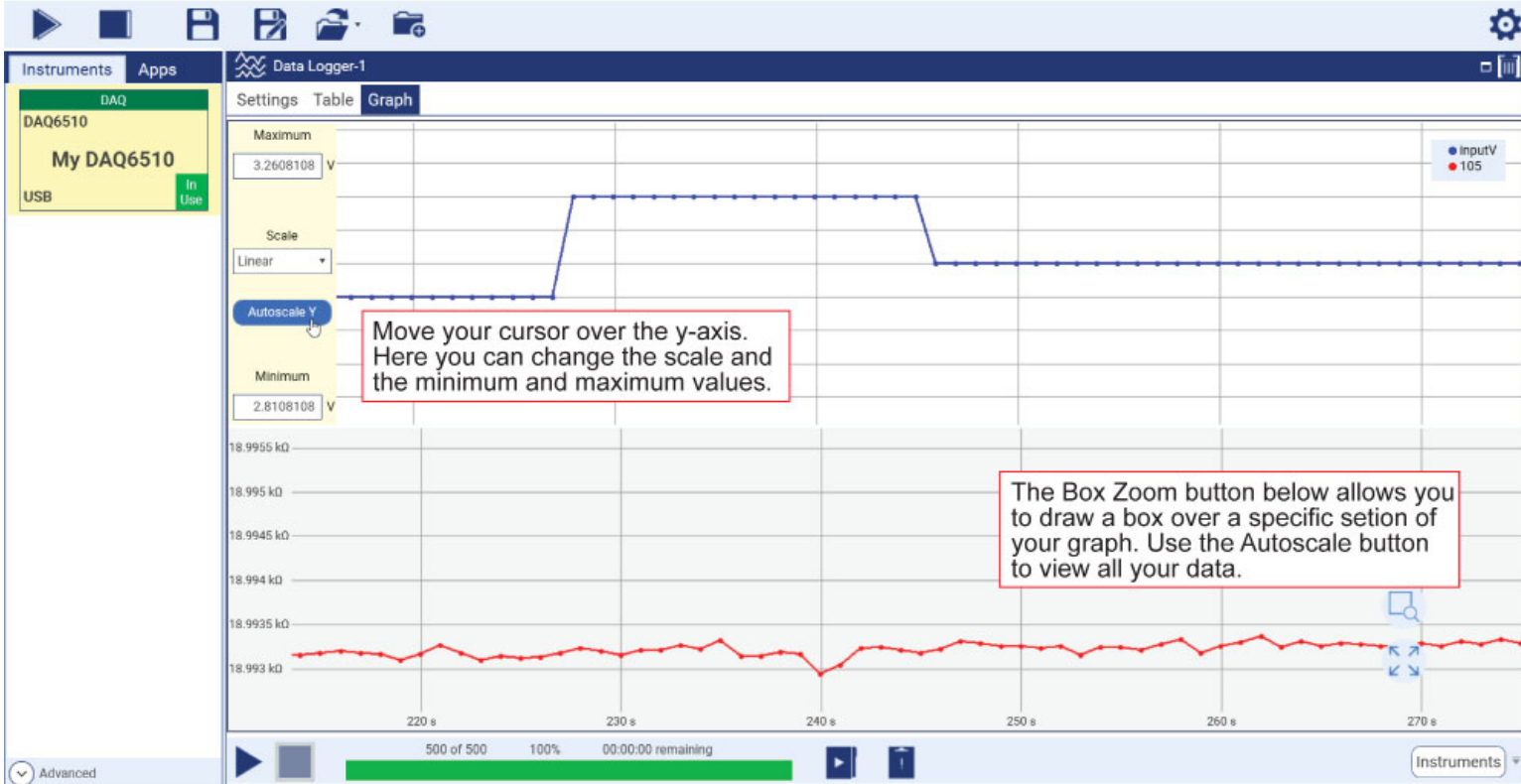


Instruments ▾



My DAQ6510
USB In Use





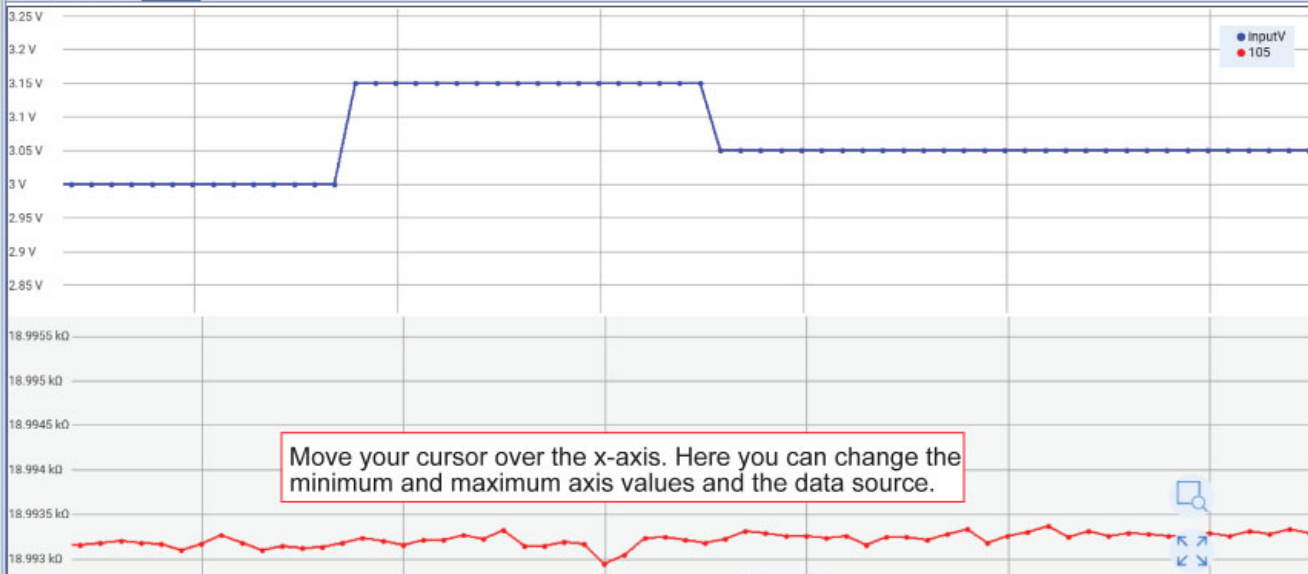


Instruments Apps

Data Logger-1



Settings Table Graph



Minimum 213.5271836 s

Source Time

Scale

Linear

Autoscale X

Maximum 275.0140363 s



500 of 500 100% 00:00:00 remaining

Time

InputV Voltage

105 Resistance



Instruments



Instruments Apps

Data Logger-1

Settings Table Graph



DAQ

DAQ6510

My DAQ6510

USB

In Use



You can view previous data using Run History.

Select the run you want to view in the table and graph. You can also export the data you select.

Export Window

Make sure you note where you are exporting your files.



Path C:\Users\jcheney\Documents\KickStart

Path

Enter the export file name. Exported Data

Table

Export only data visible in the table.

Export all data in the table
(including hidden data).

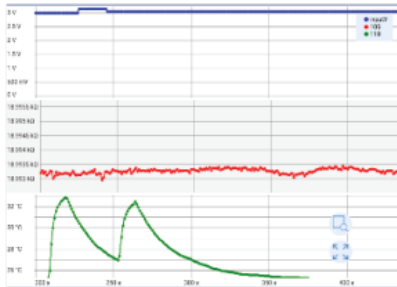
Graph

Color theme Dark Light

Resolution 800 x 600

Show gridlines

Add axis labels



Exported Data Run 3.csv
Exported Data Run 3.png

Note that you get two outputs for data export:
.csv file (table format)
.png file (graphic format)

You can keep the default settings when you select either Table or Graph, or you can modify your selections based on what you need.

Export

Cancel

Contact Information:

Australia* 1 800 709 465
Austria 00800 2255 4835
Balkans, Israel, South Africa and other ISE Countries +41 52 675 3777
Belgium* 00800 2255 4835
Brazil +55 (11) 3759 7627
Canada 1 800 833 9200
Central East Europe / Baltics +41 52 675 3777
Central Europe / Greece +41 52 675 3777
Denmark +45 80 88 1401
Finland +41 52 675 3777
France* 00800 2255 4835
Germany* 00800 2255 4835
Hong Kong 400 820 5835
India 000 800 650 1835
Indonesia 007 803 601 5249
Italy 00800 2255 4835
Japan 81 (3) 6714 3010
Luxembourg +41 52 675 3777
Malaysia 1 800 22 55835
Mexico, Central/South America and Caribbean 52 (55) 56 04 50 90
Middle East, Asia, and North Africa +41 52 675 3777
The Netherlands* 00800 2255 4835
New Zealand 0800 800 238
Norway 800 16098
People's Republic of China 400 820 5835
Philippines 1 800 1601 0077
Poland +41 52 675 3777
Portugal 80 08 12370
Republic of Korea +82 2 565 1455
Russia / CIS +7 (495) 6647564
Singapore 800 6011 473
South Africa +41 52 675 3777
Spain* 00800 2255 4835
Sweden* 00800 2255 4835
Switzerland* 00800 2255 4835
Taiwan 886 (2) 2656 6688
Thailand 1 800 011 931
United Kingdom / Ireland* 00800 2255 4835
USA 1 800 833 9200
Vietnam 12060128

Find more valuable resources at TEK.COM

Copyright © 2018, Tektronix. All rights reserved.
Tektronix products are covered by U.S. and foreign patents, issued and pending. Information in this publication supersedes that in all previously published material. Specification and price change privileges reserved. TEKTRONIX and TEK are registered trademarks of Tektronix, Inc. All other trade names referenced are the service marks, trademarks or registered trademarks of their respective companies.

* European toll-free number.
If not accessible, call: +41 52 675 3777



KEITHLEY
A Tektronix Company

KKS-903-01 Rev. E / April 2018

